

Menu Options

Our standard menu covers are available with a wooden spine or leather/material spine option and come in a range of sizes to suit your requirements. Highly durable and in a comprehensive range of woods and finishes.

Wood Spine (prices per unit)

	Qty 10-49	Qty 50-99
H-MW101 - To fit A4	£22.00	£20.35
H-MW102 - To fit A5	£14.80	£13.69
H-MW103 - To fit 1/3 A3	£18.20	£16.84
H-MW104 - To fit 1/2 A4	£16.80	£15.54



Leather Spine (prices per unit)

H-ML101 - To fit A4	£18.50	£17.17
H-ML102 - To fit A5	£12.20	£11.29
H-ML103 - To fit 1/3 A3	£14.80	£13.69
H-L104 - To fit 1/2 A4	£12.60	£11.66
H-L105 - To fit 210mm x 210mm	£17.50	£16.19



Finish Menu Options



Natural Ash

Dark Ash

Black Ash

White Ash

Antique Ash



+£1.00

+£1.00

Driftwood Ash

Smoked Ash

Natural Cherry

Dark Cherry

Natural Oak



Golden Oak

Medium Oak

Dark Oak

+£1.00

Rustic Oak

Whitewashed Oak



Walnut

Light Mahogany

Dark Mahogany

+£1.00

Salt & Pepper Oak



Salt & Pepper Oak



Natural Ash



Natural Cherry



Rustic Oak



Dark Ash



Driftwood Ash

Due to the real wood veneers being a natural product, colours and grain pattern can vary. Please also note that some finishes are an additional cost see above. Orders over 100+ please contact for exact pricing (sales@moranswoodcomponents.co.uk) or telephone

Branding Options



Laser Engraved (Burnt Effect)
(Based on area 80mm Sq.)

+ £2.00 each menu



Laser Engraved (Paint Infill)
(Based on area 80mm Sq.)

+ £2.50 each menu



Digital Printing (Full Colour)
(Based on area 80mm Sq.)

+ £2.50 each menu

Orders over 100+ please contact for exact pricing (sales@moranswoodcomponents.co.uk) or telephone

One time setup charge : £15.00 on qty less than fifty



Menu shown Laser
Engraved (Paint Infill)

Menu shown Digitally
Printed

Menu shown Laser
Engraved (Paint Infill)

Menu shown Laser
Engraved (Burnt)

Menu shown Digitally
Printed

Menu shown Laser
Engraved
(Paint Infill)

Branding costs based on an area
of 80mm Sq. for larger areas prices on request



Menu shown digital printed

Spine Menu Options

Black Leather



Dark Grey



Grey



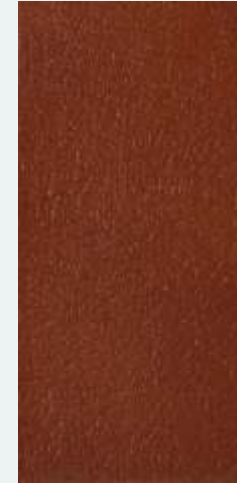
Dark Blue



Burgundy



Tan Leather



Brown Leather



Orders over 100+ please contact for exact pricing (sales@moranswoodcomponents.co.uk) or telephone

Internal Menu Options



Tag only

(holds folded paper menu)

No additional Charge



Dowel fitting

(securely holds folded paper menu)

+ £1.50



Plastic Wallet

(to show 4 sides)

(menu holds up to 3 x wallets - 12 sides)

+ £0.70 each



Internal Screw Fittings

(holds single page menus)

+ £3.00



Ring Binder

(securely holds folded paper menu)

+ £3.00

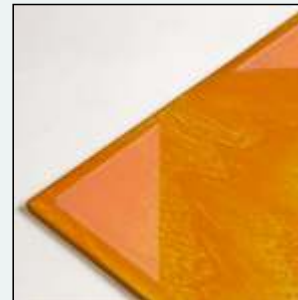


Corner Mounts

(4 corners per side)

+ £8.00 single side

+ £16.00 double side



Corner Mounts Clear

(4 corners per side)

+ £3.00 single side

+ £6.00 double side



Head & Footer Mounts

(1 per side)

+ £4.00 single side

+ £8.00 double side